



A TEREX BRAND

PRODUCT SPECIFICATION

# 7544

## FLAIL AND DISC CHIPPER



PRODUCES HIGH VOLUMES OF PREMIUM QUALITY WOOD CHIPS



# 7544 KEY FEATURES...

[www.terex.com/cbi](http://www.terex.com/cbi)

Chute folds for transportation.

270° rotating discharge chute for ideal loading. Capable of toploading or broadcasting chips.



75" diameter 4-knife chipper disc with babbitted or key knife system.

## 754 DISC CHIPPER

CBI's 754 Disc Chipper is capable of producing high-quality wood chips from 3/8"– 1" for the pulp and paper industry at up to 200 tons per hour. The 75" diameter 4-knife chipper disc delivers the most uniform chip thickness and chip length available.

It is equipped with a CAT C-32; 1,200hp engine with access to the engine from both sides to simplify maintenance.

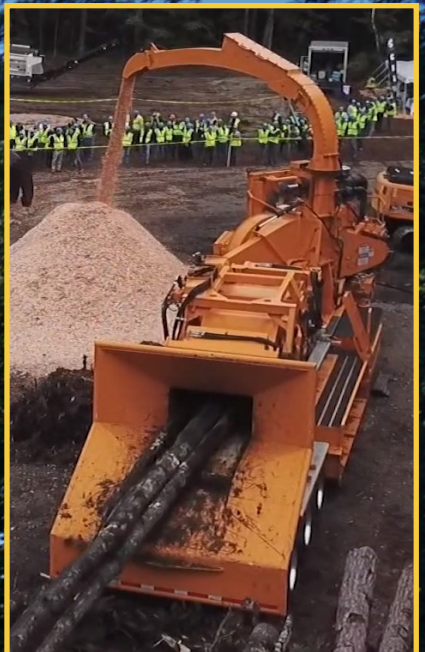
Parker IQAN controls provide operators with both increased monitoring and protection.

## 604 FLAIL

CBI's Magnum Force 604 Flail is engineered to be the industry's most durable and productive debarker, capable of processing logs up to 24" in diameter.

Material is fed in and out of the three-roll flail chamber by large diameter and high-torque top feed roll assemblies. Assemblies are equipped with position-sensing cylinders to achieve top debarking performance.

Read about CBI's three-roll chain flail design in the bottom-left corner of this page.



60" x 24" infeed for efficient loading and high throughput.

CAT C-32; 1,200hp Tier 4 diesel engine.

Aluminum guards provide easy access to maintenance items at convenient height (not shown).

Bark pusher can be set up to operate in either direction, allowing operators to push excess bark to preferred location.

## THREE-ROLL CHAIN FLAIL (OPTIONAL FOURTH AVAILABLE)



CBI's three-roll flail design (with an optional fourth flail) provides maximum surface contact with logs as they proceed through the debarking chamber. Consisting of four 44" long by 40" diameter drums, the flail is capable of running single or dual 8-link chains at speeds of 200 to 700 RPM. The top flail positions are determined by the top feed roll cylinder positioning sensors and the flail rpm is automatically adjusted based on log diameter for accurate debarkment. This rugged design ensures that pristine debarked logs are consistently presented to the chipper disc.

Processes logs up to 24" in diameter



Pushes excess bark to the side



200 tons per hour of premium chips





## OVERALL

Width: 11' 8" (3,556 mm)  
Height: 13' 6" (4,114 mm)  
Length: 53' 4" (16,256 mm)  
Weight: 113,000 lbs.

## FLAIL DRUM

Width: 44" (1,117 mm)  
Diameter: 12" (304 mm)  
Chain: Single or double 9-link chain  
Speed: 200 to 700 rpm

## FLAIL DRIVE

Danfoss Hydrostatic Pumps  
Rexroth motors, synchronous drives

## TOP FEED ROLL 1

Width: 33.1/4"  
Diameter: 20.3/4"  
Motor: Built-in high-torque Poclain

## TOP FEED ROLL 2

Width: 47.1/4"  
Diameter: 20.3/4"  
Motor: Built-in high-torque Poclain

## BOTTOM FEED ROLLS

High-torque Brevini planetary  
with Char-Lynn hydraulic motor

## POWER

Engine: CAT C-32; 1,200 hp  
Flexxaire Fan: Reversing pitch radiator  
fan that reverses airflow every 5 - 15  
minutes automatically (adjustable)

## CHIPPER DISC

Length: 75" 4-knife babbitted or key  
knife adjustable and replaceable  
upper and lower anvils

## DRIVE

Arimid V belt

## FUEL TANK

Capacity: 500 gallons (1,900 liters)

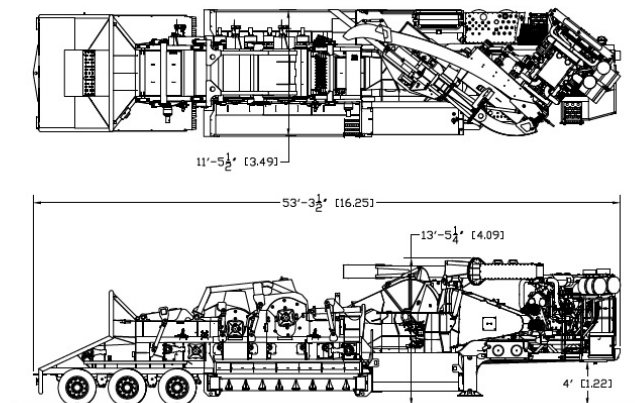
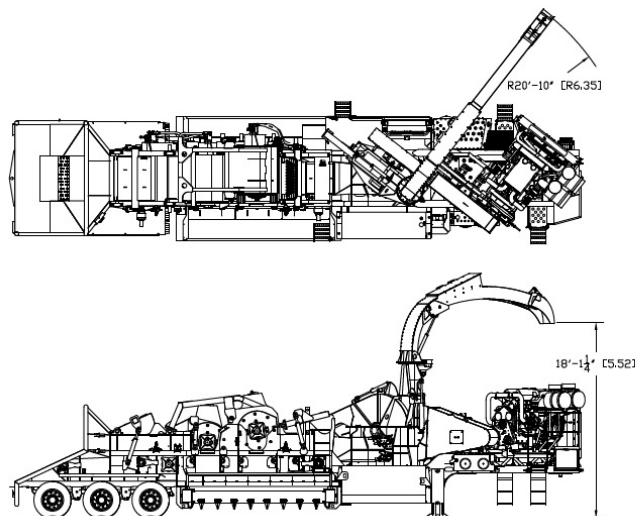
## ELECTRICAL

Parker IQAN system with full  
remote control high intensity light  
package. Bi-directional bark pusher  
with 270° rotating discharge chute

## HYDRAULICS

Hydrostatic and open loop flail  
hydraulics powered by auxiliary  
belt-driven gearbox  
Split hydraulic system: 200 gallon  
and 75 gallon reservoirs

Specifications subject to change without notice.



### Continental Biomass Industries

World's best stationary and portable material recovery systems.

22 Whittier Street, Newton, NH, 03858  
Phone: (603) 382-0556 Fax: (603) 382-0557  
Web: [www.terex.com/cbi](http://www.terex.com/cbi) Email: [NWT.InfoFWD@terex.com](mailto:NWT.InfoFWD@terex.com)

Distributed by: